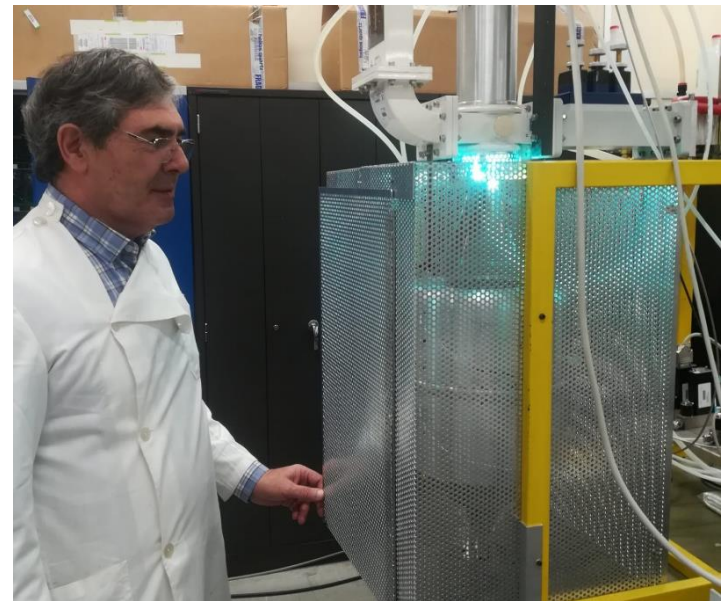
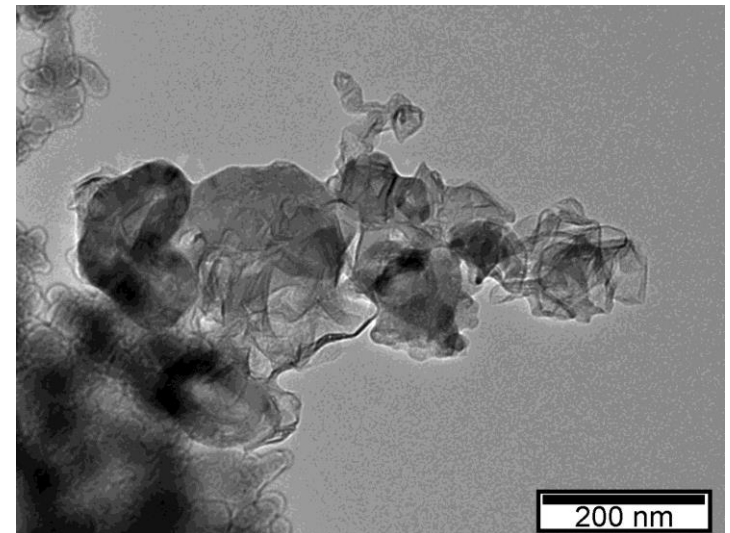


# Graphene production ramps up

After refining the synthesis processes for graphene and its derivatives in standard size reactors, the Plasma Engineering Laboratory team is now focused on increasing the production yield. This month, an important steep was taken towards that goal with the production of the **first carbon-based nanostructures** using the **new state-of-the-art PEGASUS machine**.



Test run of the PEGASUS machine, in which the first carbon-based structures were synthesized



TEM image of the first graphene sheets produced in the PEGASUS reactor